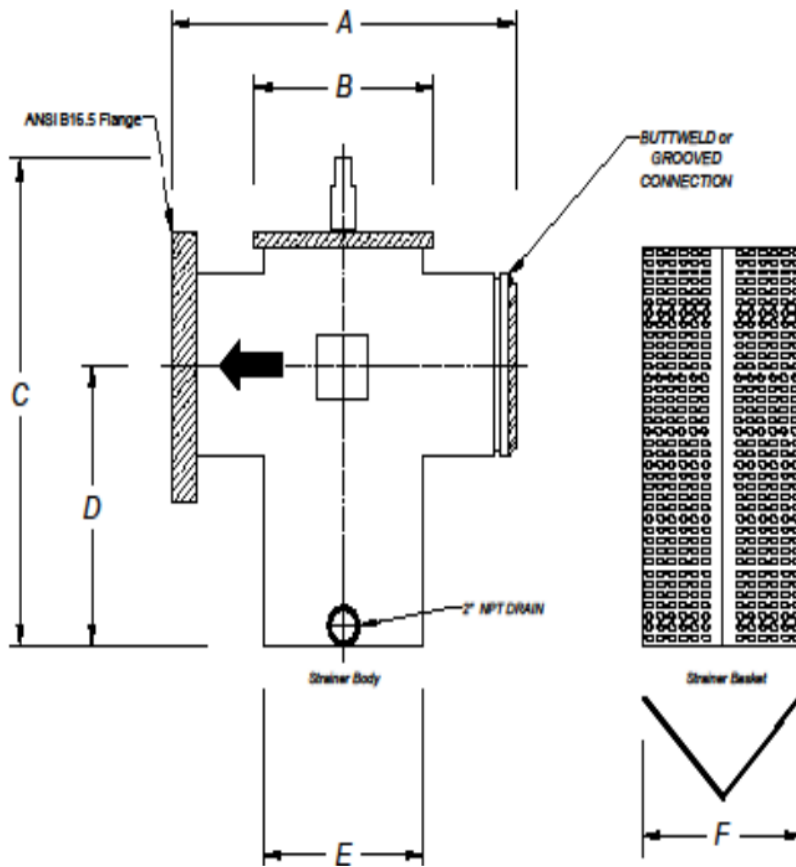




**Description:** The HURRICANE suction line strainer protects mud pump fluid ends from unwanted debris entering the fluid stream. The strainer is easily cleaned and returned to service in minutes. A variety of end connections are available, including butt weld, flanged or threaded, to install in the suction line of any mud pump. HURRICANE strainers are built to withstand the rough service found on drilling rigs. Inlet / outlet diameters of 4", 6", 8", 10" and 12" are standard. Provide the inlet / outlet size and height D as shown below with any price requests.



## HURRICANE Suction Line Strainers